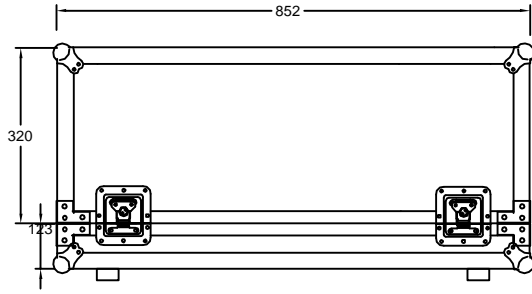
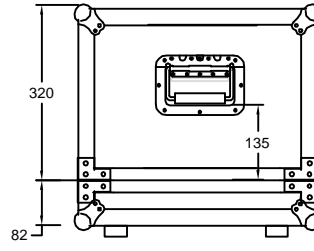


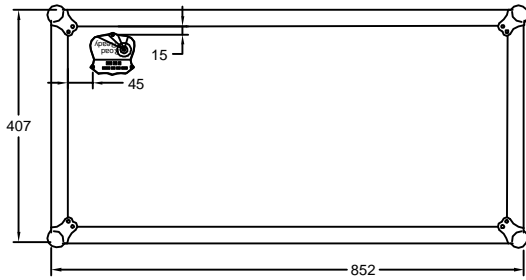
RRGAL32



FRONT VIEW
BACK VIEW

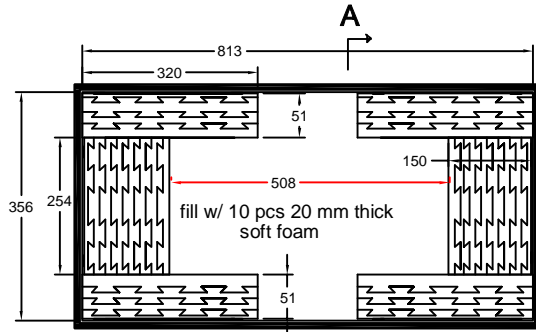


LEFT VIEW
RIGHT VIEW

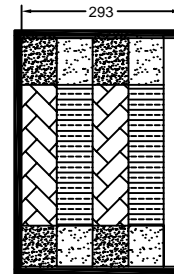


TOP VIEW

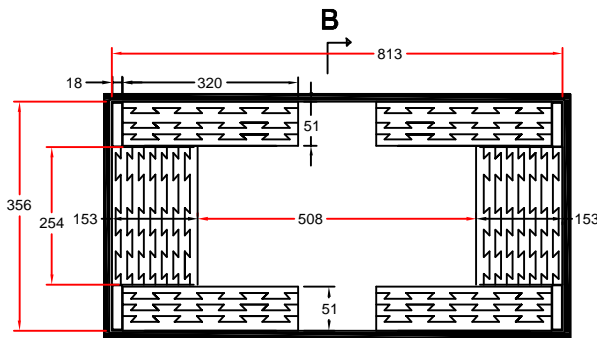
Internal max. 813*356*356 mm
Internal min. 508*125*254 mm



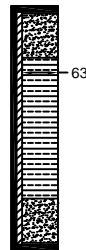
TOP VIEW OF COVER



A-A VIEW



TOP VIEW OF BASE



B-B VIEW

Signature of Approval

Printed Name

2009-12-14